

CONT. WOOD
BLOCKING (NOT BY
TERREAL)

GIRT SEGMENT

STAINLESS STEEL
INSTALLATION TOP
CLIP

STAINLESS STEEL
FASTENERS (TYP.)

CONT. VERTICAL
SUPPORT RAIL

TERREAL PITERAK
SL4 TERRACOTTA
PANEL

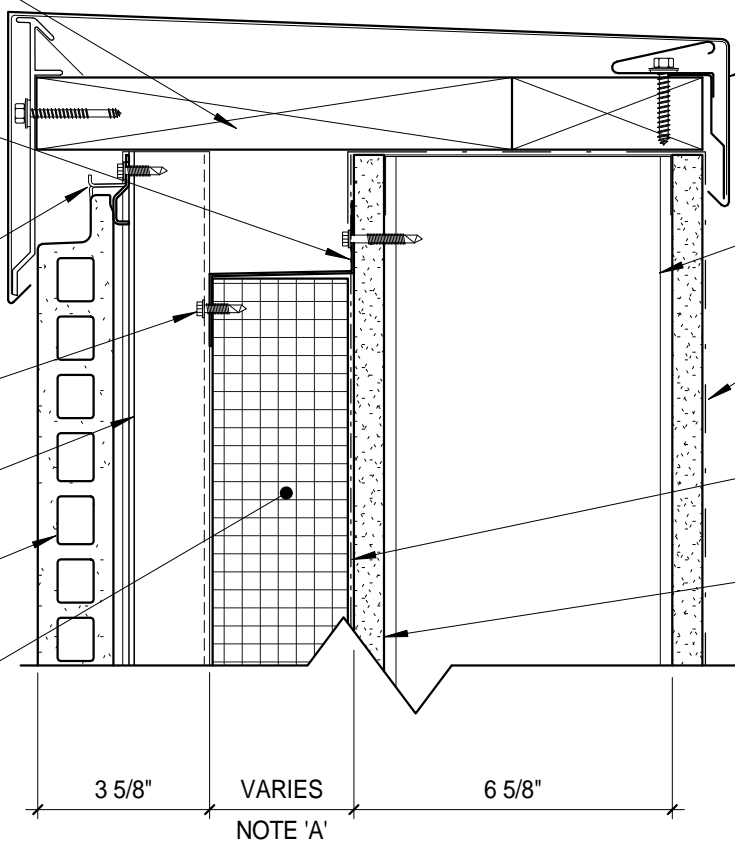
RIGID INSULATION
(NOT BY TERREAL)

CONT. METAL
COPING (NOT BY
TERREAL)

EXTERIOR WALL
FRAMING (NOT BY
TERREAL)

ROOF MEMBRANE -
EXTEND OVER AIR
AND MOISTURE
BARRIER (NOT BY
TERREAL)

EXTERIOR WALL
SHEATHING (NOT BY
TERREAL)



3 5/8"

VARIES
NOTE 'A'

6 5/8"

GENERAL NOTES:

- A. THICKNESS SHALL BE COORDINATED WITH PROJECT REQUIREMENTS BASED ON ENGINEERING OF TERREAL TERRACOTTA RAINSCREEN SYSTEM AND THERMAL ENVELOPE REQUIREMENTS.
- B. RIGID INSULATION INDICATED MAY BE MINERAL WOOL OR NFPA 285 COMPLIANT RIGID FOAM.



P.O. BOX 309 New Lexington, Ohio 43764
Telephone: (888) 582-9052 Fax: (740) 342-1906
www.terrealna.com

SYSTEM:	PITERAK SL4
DETAIL #:	PSL4-206f
Description:	PARAPET COPING SECTION
Building Construction:	COLD-FORMED METAL STUD
Drawing Date:	2018.12.19
Scale:	3" = 1'-0"
Terreal N.A. Reference #:	PITERAK SL4 PSL4-206f Designer

The information contained on this drawing is the confidential property of Terreal North America, LLC. Any use or reproduction in whole or in part without the express written permission of Terreal North America, LLC is strictly prohibited. Terreal North America, LLC reserves the right to modify the configuration of item(s) shown without prior written notice.