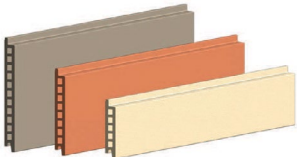


PITERAK® SL4 FACADES

Piterak® SL4 is a 40mm thick, double-skin terra cotta rainscreen cladding system with overlapping horizontal reveals. This large module system comes standard in multiple sizes and is available in a variety of made-to-order options—with a maximum height of 2'-0" and a maximum length of 6'-0". Panels are finished in lengths required for your project or they may be cut by the installation contractor for specific field conditions. Through exceptional engineering and manufacturing, our system provides a high wind resistance and the highest impact resistance rating under international standards. Piterak® SL4 terracotta cladding panels are supported by our engineered rainscreen framing system and stainless steel installation clips.

STANDARD PHYSICAL CHARACTERISTICS

	CENTER TO CENTER MODULE (FT) <i>CENTER TO CENTER MODULE (MM)</i>	PANEL SIZE (IN) <i>SIZE (MM)</i>	UNIT WEIGHT (LBS) <i>UNIT WEIGHT (KG)</i>	WEIGHT (LBS) <i>WEIGHT (KG) PER M2</i>
	8" x 60" <i>203 x 1219</i>	8.55" x 59.5" x 1.57" <i>217 x 1206 x 40</i>	39.4 <i>17.9</i>	11.8 <i>57</i>
	12" x 60" <i>305 x 1219</i>	12.55" x 59.5" x 1.57" <i>319 x 1206 x 40</i>	59 <i>26.8</i>	11.8 <i>57</i>
	18" x 60" <i>457 x 1219</i>	18.55" x 59.5" x 1.57" <i>471 x 1206 x 40</i>	88.5 <i>40.2</i>	11.8 <i>57</i>
	24" x 60" <i>609 x 1219</i>	24.55" x 59.5" x 1.57" <i>624 x 1206 x 40</i>	118 <i>53.6</i>	11.8 <i>57</i>

RAINSCREEN BENEFITS

- ◆ Improves structure life expectancy by protecting primary wall with second skin
- ◆ Energy savings
- ◆ Low maintenance costs
- ◆ Lightweight
- ◆ Can be installed year-round, in all weather conditions

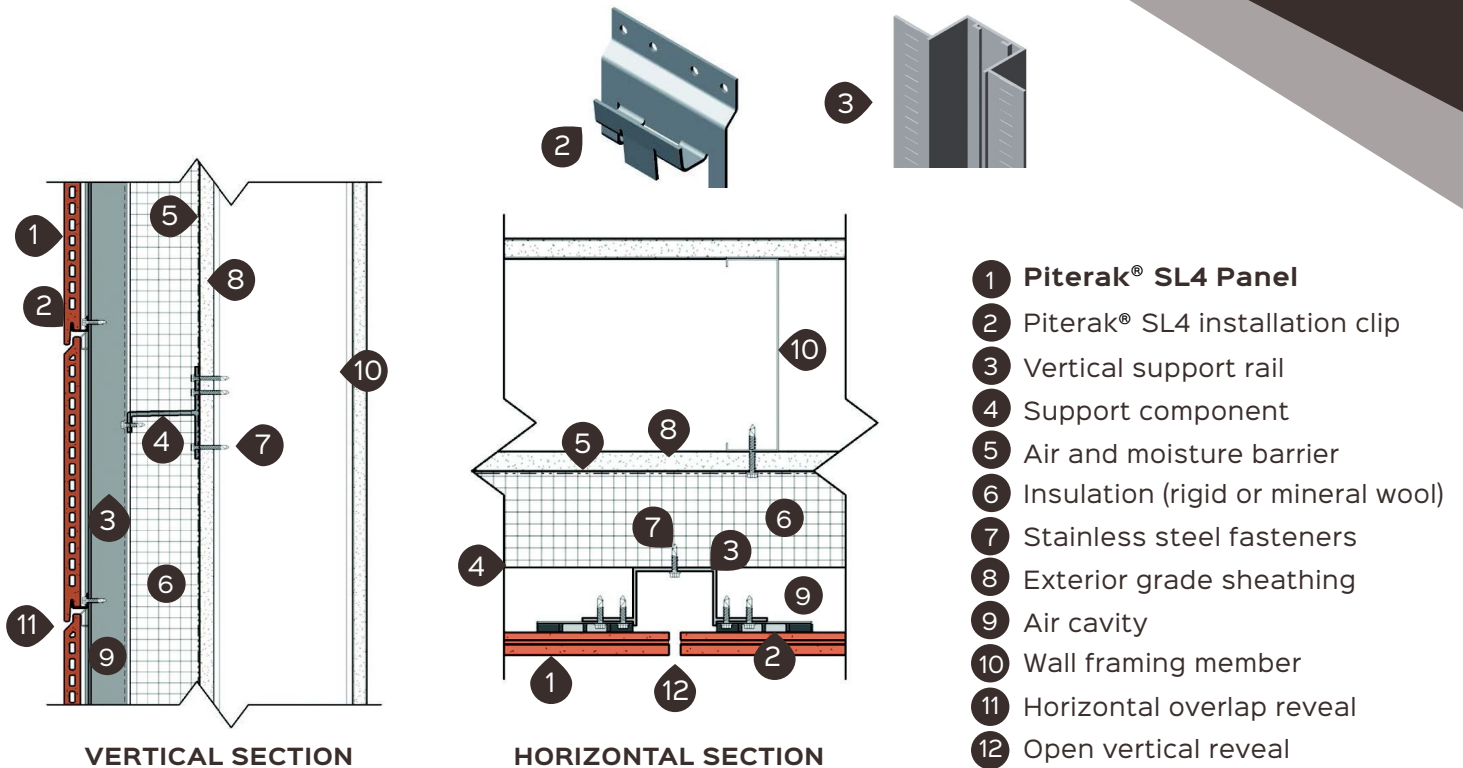
TERRACOTTA PANEL ATTRIBUTES

- ◆ Warm, all-natural material provides superior aesthetics
- ◆ Variety of colors, textures, and sizes
- ◆ Color permanent façade
- ◆ Class A fire rated
- ◆ Sustainable material lasting 100 years
- ◆ Maintenance-free

CERTIFICATIONS

- ◆ ASTM C67-07A Breaking Load Test (passed)
- ◆ ASTM C67-07A Efflorescence Test (passed)
- ◆ ASTM C67-07A Freeze-Thaw Test (passed)
- ◆ ASTM C67-07A Water Absorption Test (passed)

PITERAK® SL4 INSTALLATION DETAILS



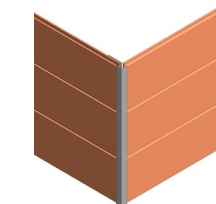
SPECIAL SHAPES

Special shaped panels can add texture and drama to a building's facade. Additive and subtractive elements, grooves, bars, chevrons, rounded ribs, or gentle rolling curves are a sampling of the possibilities. Contact us to explore the possibilities and realize your vision.

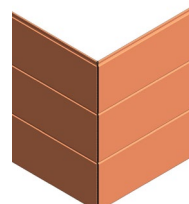


CORNERS

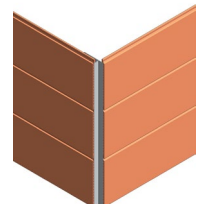
Corner systems can be configured to meet your design aesthetic.



METAL CORNER TRIM



QUIRK MITER PANELS

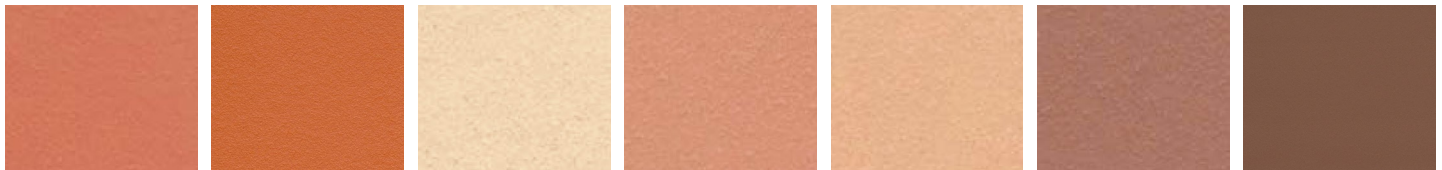


REENTRANT METAL CORNER TRIM

COLORS AND FINISHES

Piterak Slim is available in a variety of through-body colors, custom glaze colors, and multiple finish textures. Terreal North America has custom color capabilities to meet your design needs.

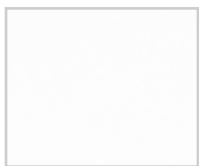
SOLA COLOR COLLECTION STANDARD THROUGH-BODY COLORS



01 Red 02 Red Orange 03 Champagne 04 Salmon 06 Sand 07 Sienna 08 Chocolate

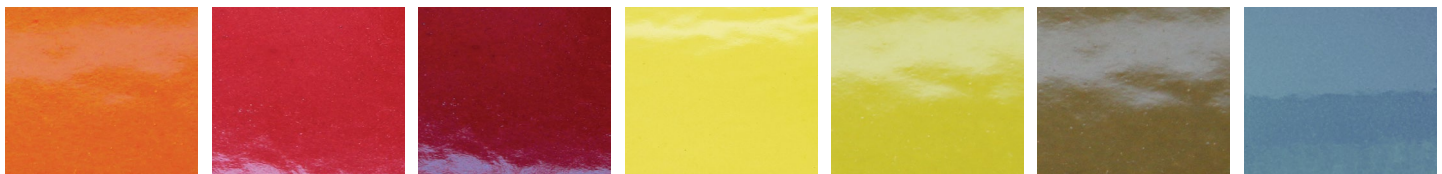


09 Coffee Brown 11 Sahara Beige 12 Light Grey 13 Storm Grey 14 Dark Grey 15 Slate Grey 16 Ebony



30 Arctic White

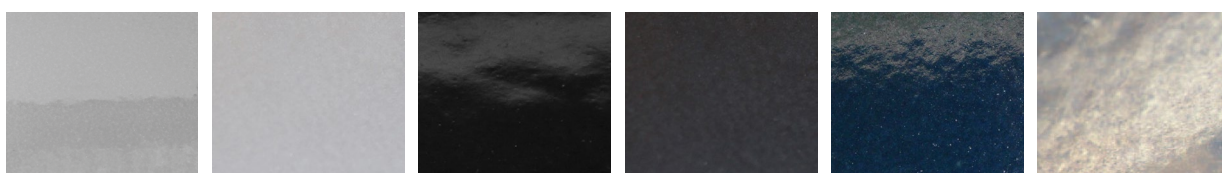
GLAZE COLOR COLLECTION



Orange Red Mars Red Yellow Lichen Shadow Earth Petrol Blue



Verdigris Green Cobalt Blue Violet Calamine Pink Glossy White Matte White

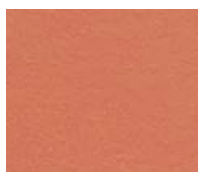


Glossy Light Grey Matte Light Grey Glossy Black Matte Black Marine Black Steel

COLORS AND FINISHES



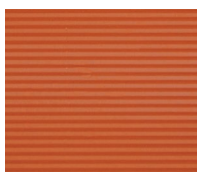
AVAILABLE PANEL FINISHES



Smooth



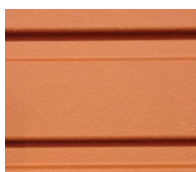
Ridged



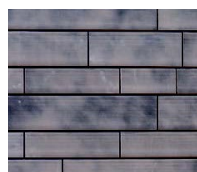
Fine Ridged



Brushed



Grooved



Patinated



In-person design consultations are available at our showroom space in Ludowici's Dallas Design Center. Please visit www.terrealna.com and contact us to schedule an appointment.