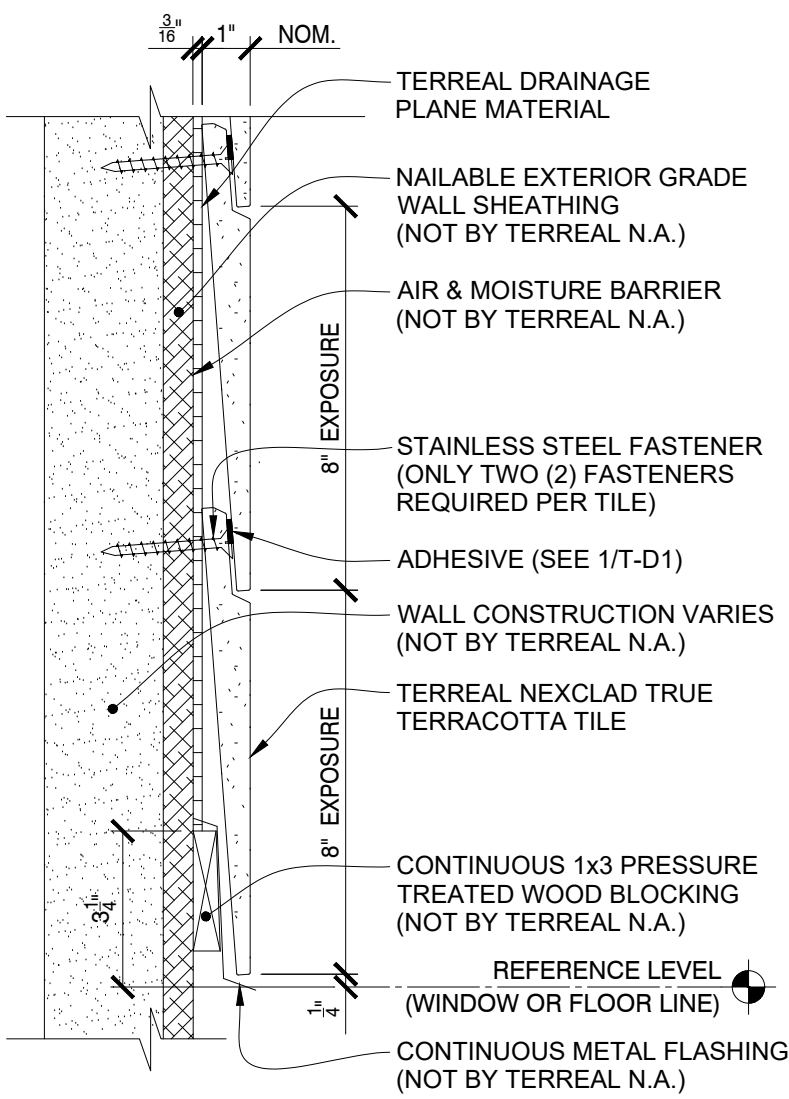


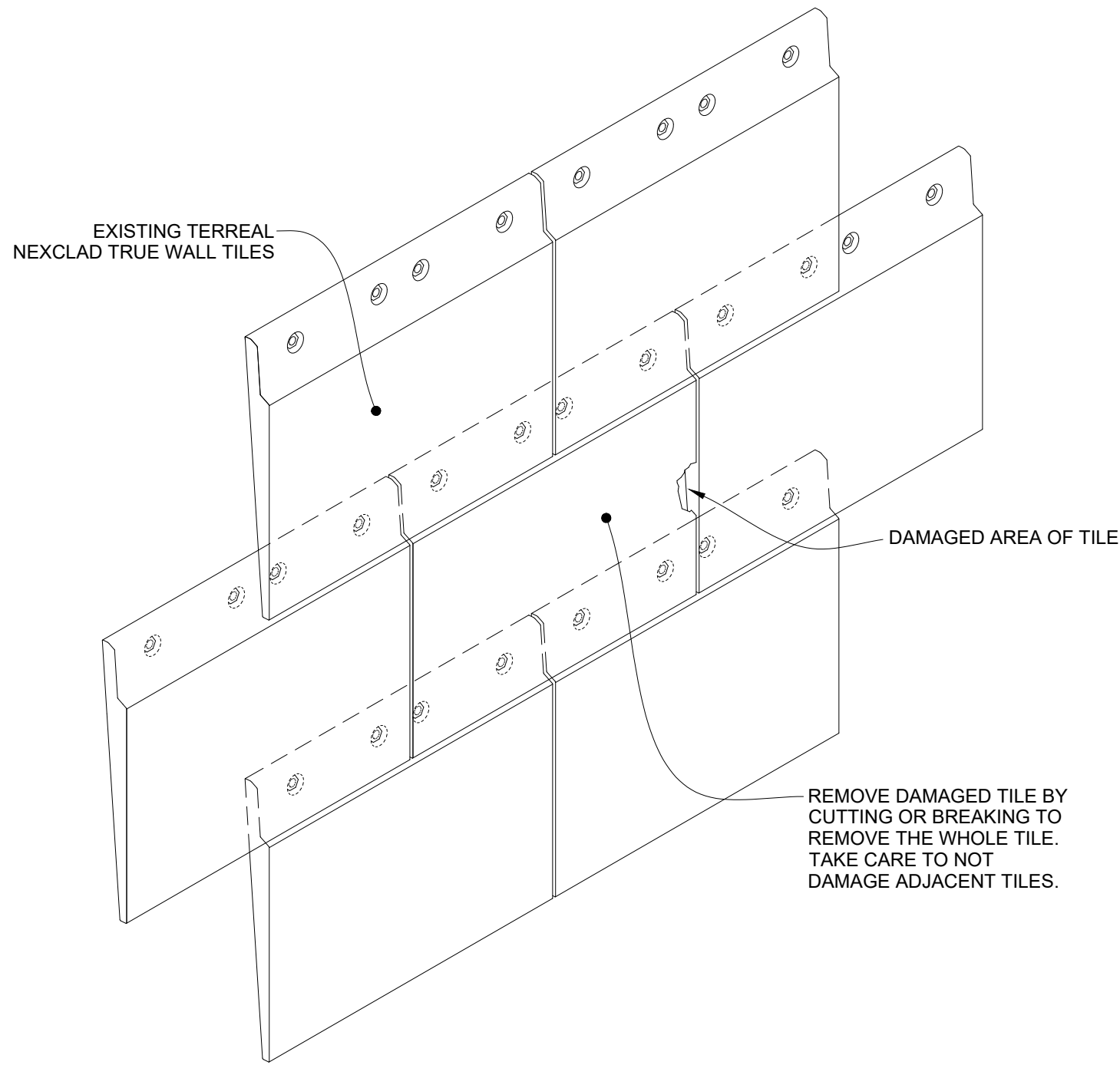
TYPICAL WALL TILE PLAN
SCALE: 3" = 1'-0"

5



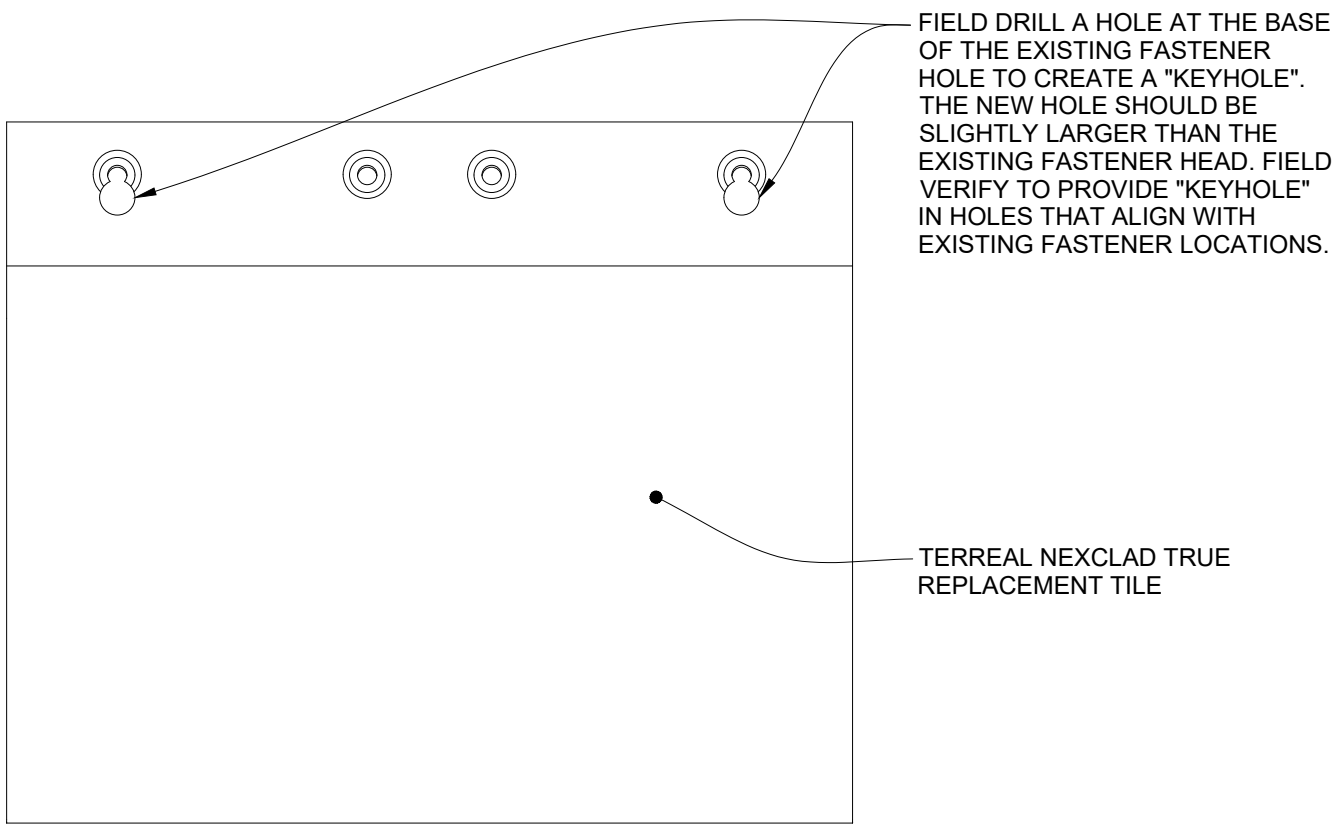
TYPICAL WALL TILE SECTION
SCALE: 3" = 1'-0"

6



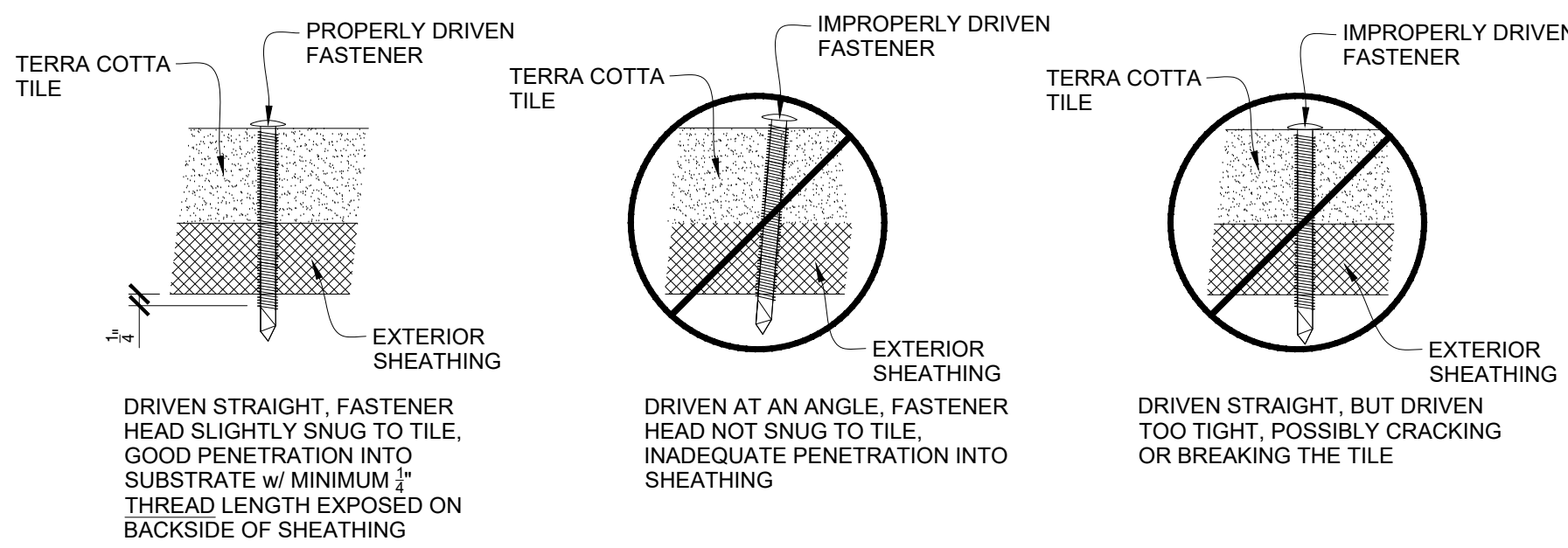
TILE REPLACEMENT - STEP 1
SCALE: 3" = 1'-0"

8A



TILE REPLACEMENT - STEP 2
SCALE: 3" = 1'-0"

8B

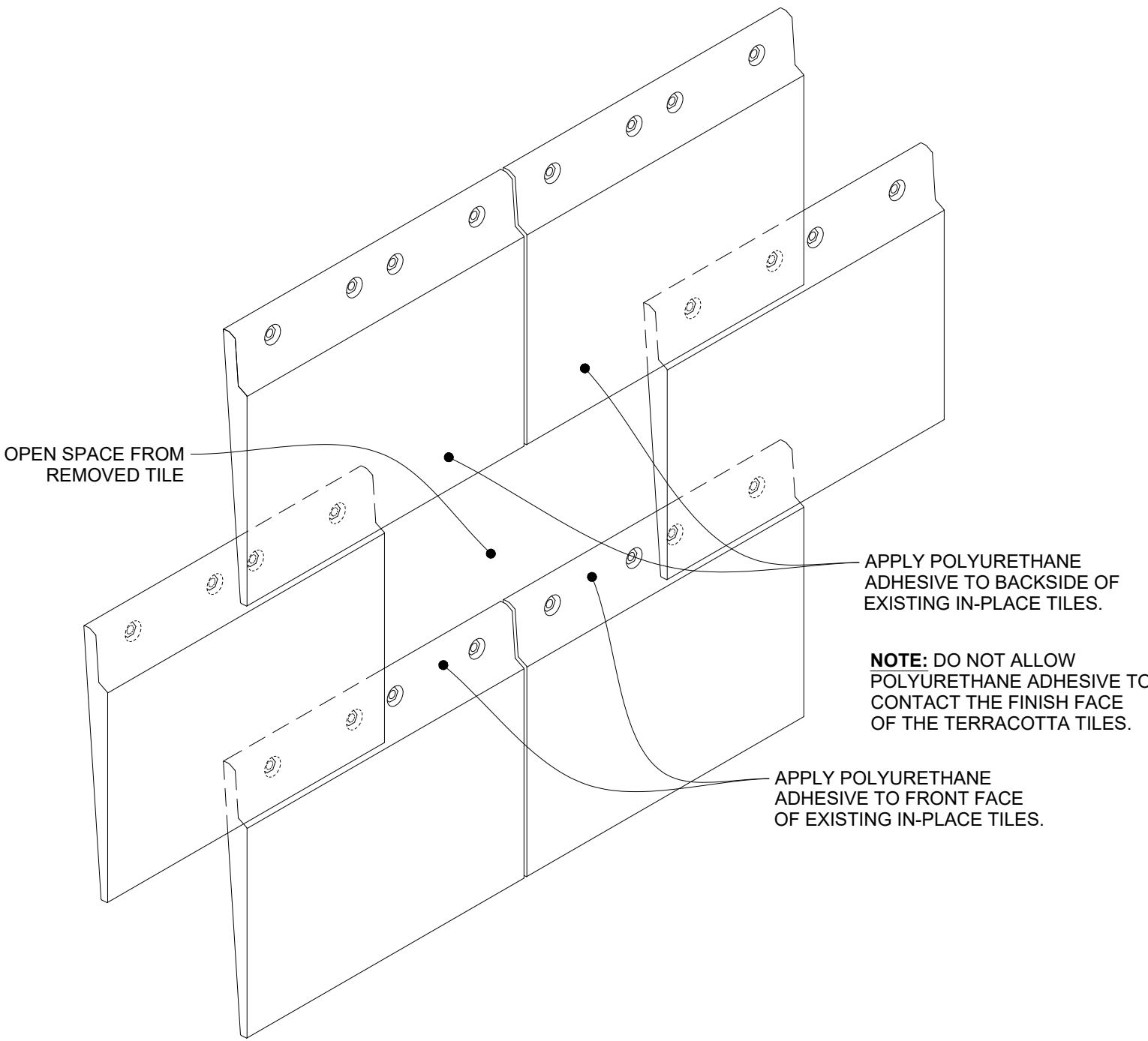


** FASTENER INSTALLATION NOTE:
DO NOT USE AN IMPACT DRIVER OR CORDED DRILL TO INSTALL FASTENERS. IF USING A CORDLESS DRILL, A MAXIMUM TORQUE SETTING OF 8 SHOULD BE USED TO PROVIDE A SNUG FIT.

NOTE: REFER TO ADDITIONAL NOTES AND DETAILS FOR FASTENER TYPE AND SUBSTRATE MATERIAL

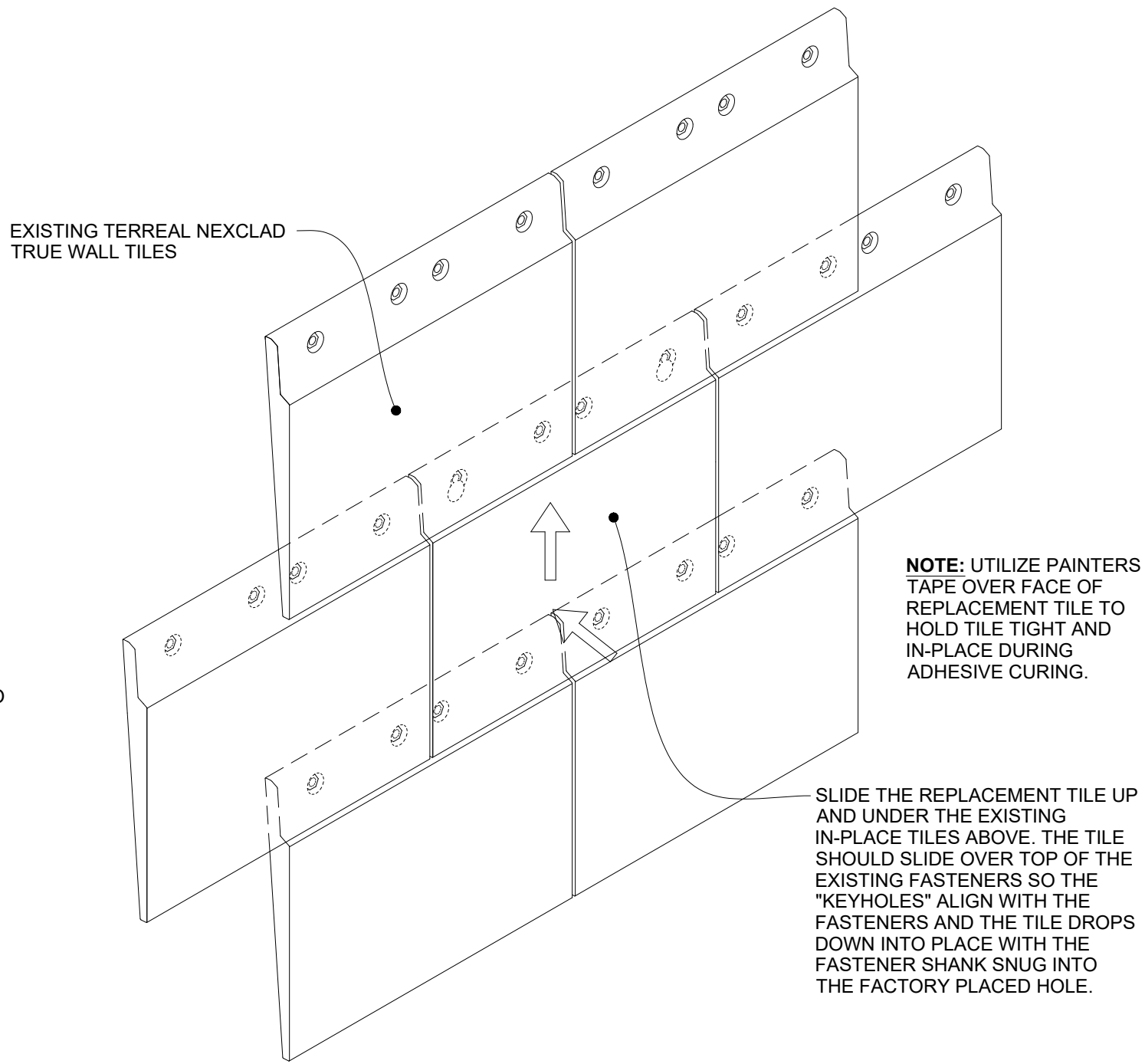
FASTENER INSTALLATION DIAGRAM
NTS

7



TILE REPLACEMENT - STEP 3
SCALE: 3" = 1'-0"

8C



TILE REPLACEMENT - STEP 4
SCALE: 3" = 1'-0"

8D

NeXclad True Installation Guide



TERREAL NORTH AMERICA
P.O. BOX 309
New Lexington, Ohio 43764
Telephone: (888) 582-9052
Fax: (740) 342-1906
www.terrealna.com

Revision	1	11.24.2020
Revision	2	03.03.2021
Revision	3	04.13.2021
Revision	4	09.24.2021
Revision	5	01.12.2022

Sheet Title:

STANDARD
INSTALLATION
DETAILS &
NOTES

Project #: NeXclad True Installation

Issue Date: 09.24.2021

Scale: 3" = 1'-0"

Drawn By: WFG

Sheet Number:

TNA-NXT-2

The information contained on this drawing is the sole property of Terreal North America, LLC. Any reproduction in whole or part without the express written permission of Terreal North America, LLC is strictly prohibited. Terreal North America, LLC reserves the right to modify the configuration of item(s) shown without prior written notice when deemed necessary for product development and/or enhancement.